

Growing Rural Youth Development Program 2016

Alamo Resource Conservation &
Development Area Inc.

Alamo RCD Growing Rural Program

**Where Kids GROW,
LEARN and GIVE.**

Presented by
Alma Aguirre
Alamo RCD Board Chair



Alamo Resource Conservation & Development Area Inc.

Helping communities and the people who make them thrive meet local needs by protecting our water and land resources, encouraging environmental sustainability, promoting agriculture and enhancing the quality of life for all citizens in our ten county area.



Mission: To support **youth** in our area within projects centered on Gardening with A Purpose, that instill **environmental stewardship**, build **leadership** qualities, provide **academic** improvement and enhance **life skills** training.

In early 2016

The Boys & Girls Club of Boerne joined together with Alamo RCD and St. John Lutheran Church Community Garden to make this program a success!!



In the Spring of 2016 the Growing Rural Garden Club Kids

Were able to:

- ❖ plan, plant and nurture two garden beds,
- ❖ **assist with the upkeep** of the Community Garden,
- ❖ increase their knowledge of S-M-A-R-T objectives: **Science, Math, Art, Research and Technology**
- ❖ develop **lifelong skills** that can stop food insecurity and hunger.



In Summer of 2016, the Kids continue by Learning about the benefits of gardening!

Their garden provides:

- ❖ **Fresh Vegetables** for the table,
- ❖ Great **outdoor exercise** and Fun for **club members**,
- ❖ Increased **knowledge** in Science, Math, Art, Research Nutrition and Technology
- ❖ A **lifelong skill** in gardening and agriculture that will help feed them and their families in the future...

& they enlarge their

GARDEN to FOUR Garden Beds!



Garden Club Kids build their garden.



Learn what a Garden **Needs...**



Providing
more
fertilizer
and
garden
soil!



Cultivate the
soil and get the
garden beds
ready to
plant....



**Plant seedlings
with care...**



**Water the plants and
making sure that they get
enough Sun!**



Applying Mulch to save water and control
soil temperature.



...and attract
pollinators in their
Butterfly Garden!



They also pull weeds
and keep the garden
clean!



Growing
Rural Kids
Learn how
important
TEAM
work is!



As they made their Gardens **GROW...**



and **GROW...**





And Discovered the JOY
of Gardening!!



Kids also Grow S-M-A-R-T
As they complete their
JOURNALS



Science
Math
Art
Research
Technology

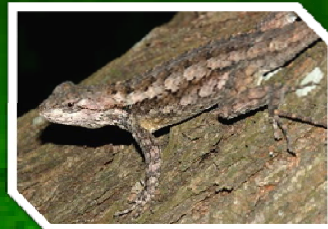




Growing Rural
Kids
experience
the **SCIENCE** of
Gardening!



As they learn about a Garden's **Ecosystem**!



Growing Rural Garden Kids also experience the ARTS!



"Inch by Inch
Row by Row, We
are going to make
this Garden Grow"
Garden Song
Performance



Growing Rural Kids Have FUN Together!



Growing Rural Garden Club Kids Have Learned how to....

- ❖ Produce their own **FOOD** and food for the community in need,
- ❖ **CARE** for vegetables as they grow and are ready for harvest,
- ❖ Enjoy delicious **MEALS** that include fresh vegetables,
- ❖ **COMMUNICATE** and work together as a **TEAM**,
- ❖ Practice **SAFETY** rules and be **RESPONSIBLE** citizens in the garden
.....As they gain in **PRIDE** and **LEADERSHIP!**



The BGC Growing Rural Gardens prosper, as
the **Garden Club Kids LEARN and GROW!**



Alamo RCD
and the
Boys and
Girls Club
Believe that
our
**Children are
our Future!**



Alamo RCD would also like to especially thank:

- ❖ Kristin Skubal,
Boys & Girls Club of Boerne Director
- ❖ Darlene Keenum,
Boys & Girls Club Garden Club Leader
- ❖ St. John Lutheran Church Community Garden
Matt Olson, Vineyard Committee Director

**Alamo RCD Growing Rural Program
has now provided \$1000 in Support
for these Garden Club Kids program in
Boerne this year with
current matching funds of \$1000 also
provided by St. John Lutheran Church,
toward a total budget need of
\$2220 for continued
sustainability.**



**Alamo RCD Growing
Rural Program is now in
Three Counties!**

**Our Thanks to our 2016 supporters in
Bandera, Comal and Kendall Counties:**

- Boys & Girls Clubs in Lakehills & Boerne
- REACH Home School System in Comal Co.
- HEB Corporation
- Baptist Health Foundation of San Antonio
- National Association of RCD Councils
- Multiple individual donors



Alamo Resource Conservation & Development Area Inc.

For more information go to

www.alamorcd.org

or email alamorcd@gmail.com

Alamo RCD is also on facebook at:

<http://facebook.com/alamorcd>

and on other multiple social network pages!